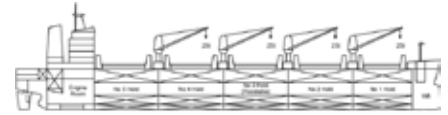


# Belt Self-Unloading Bulk Carrier

## Vessel: Energy Enterprise



International Shipholding Corp.



<b>Type</b>	<b>Coal Carrier</b>
Flag	USA
<b>Port of Registry</b>	<b>New Orleans, LA</b>
Owner	Enterprise Ship Co. Inc.
<b>Builder</b>	<b>General Dynamics, Quincy</b>
Launching	August 1983
<b>Delivery</b>	<b>August 1983</b>
Official Number	657540
<b>Call Sign</b>	<b>WBJF</b>
Classification/ID No.	ABS/8304743
<b>Main Engine:</b>	<b>General Electric Turbine</b>
-Type	Coal-Fired
<b>-MCR Output</b>	<b>12,000 SHP</b>
-Normal Output	10,800 SHP
<b>Length Overall</b>	<b>665' 11 3/16"</b>
Length B.P.	643' 5"
<b>Breadth Extreme</b>	<b>95' 00"</b>
Breadth Moulded	95' 00"
<b>Depth Moulded</b>	<b>56' 00"</b>
Draft (S.S.W.)	34' 11/16"
<b>Deadweight (S.S.W.)</b>	<b>38,234 LT</b>
Displacement (S.S.W.)	48,800 LT
<b>Lightship Weight</b>	<b>10,566 LT</b>
Car Capacity	N/A
<b>Barge Capacity</b>	<b>N/A</b>
Cargo Tank Capacity	N/A
<b>TPI - Tons Per Inch</b>	<b>125</b>
TEU Capacity	N/A
<b>Number Car Decks</b>	<b>N/A</b>
Bale Cubic	1,450,000
<b>Grain Cubic</b>	<b>N/A</b>
Gross Registered Tons	24,900 Tons
<b>Net Registered Tons</b>	<b>16,131 Tons</b>
Suez – GRT	28,250 Tons (intl)
<b>Suez – NRT</b>	<b>8,475 (intl)</b>
Panama – GRT	31,908.20 Tons
<b>Panama – NRT</b>	<b>20,404.87</b>
Holds/Cargo Tanks	5
<b>Hatches</b>	<b>10 Cargo</b>
Gear	3000 LT Per Hour Self Discharger
<b>Trial Speed</b>	<b>15.7 Knots</b>
Service Speed	14.47 Knots
<b>Fuel Consumption Coal</b>	<b>10,800 HP – 89.6 LP day</b>
-Fuel Oil Consumption	10,800 HP – 398 Bbl Day
<b>-Diesel Oil Capacity</b>	<b>6,775 Gal.</b>
-Fuel Oil Capacity	1,040.2 LT (@98%)
<b>-Coal Bunk. Cap.</b>	<b>745.30 LT</b>