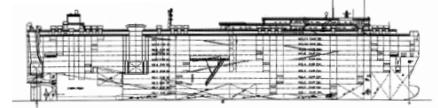


Pure Car/Truck Carriers

Vessel: Asian Emperor



International Shipholding Corp.



IMO/Lloyd's No.	9176632
Panama Canal SI No.	6000399
Suez Canal ID No.	24017
Owner and Operator	LCI Shipholdings, Inc.
Classification	American Bureau of Shipping
Builder	Hyundai Heavy Industries
Launching	30 April 1999
Delivery	24 May 1999
Flag	Panamanian
Port of Registry	Panama
Official Number	26387-99
Call Sign	3FKB9
Type (Kind of Cargo)	Car Carrier
Length Overall	199.98 M
Length B.P.	190.00 M
LOA with Stern Ramp Down	235.00 M
Breadth Extreme	32.26 M
Breadth Moulded	32.26 M
Depth Moulded	32.09 M
Bow to Bridge Front	36.00 M
Bow to Side Port	132.93 M
Bow to Stern Port	
Bridge Wing to Bow	38.25 M
Bridge Wing to Stern	161.73 M
Bridge Wing to Ramp	156.98 M
Bridge Wing to Side Ramp	98.25 M
B.L. HT. of Antenna Fixed	45.87 M
B.L. HT. of Folded Antenna	
B.L. HT. of Highest Antenna	45.87 (Fixed)
Draft (S.S.W.)	10.018 M
Deadweight (S.S.W.)	12,511 M/T
Displacement (S.S.W.)	37,917 M/T
Lightship Weight	16,438 M/T
Gross Registered Tons	55,729
Net Registered Tons	21,868
Suez - GRT	60,813.88
Suez - NRT	56,305.14
PC/UMS NRT	55,619.00
Holds/Hatches	C/DKS 1-4/3 Holds. C/DKS 5-12/4 Holds.
Number Car Decks	12
Total Car Capacity	6402
Truck Capacity	289
Total Square Footage	54,076 m² 16,481.56 ft²
TEU Capacity	N/A
Main Engine: Type & No.	Hyundai-Man B&W 7S60MC, No. AA1075
MCR/Normal Output BHP	19,460 BHP / 17,510 BHP
Trial Speed	20.9 Knots
Service Speed	20.1 Knots
Chartered Speed	19.5 Knots
Generators: Type & No.	(1-2&3) Hyundai-Man B&W 6L28/32H, ND-BA0673
Bow Thruster & Rating	KH1 KT-187B1, 1325 KW.
HFO Consumption Sea/Port	58.2 M/T. (Sea) 8.0 M/T. (Port)
MDO Consumption Sea/Port	Nil (Sea) Nil (Port)