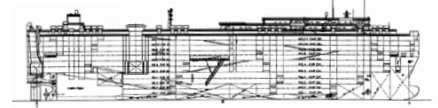


Pure Car/Truck Carriers

Vessel: Cypress Pass



International Shipholding Corp.



| | |
|--|---------------------------------------|
| ABS No. | 8800535 |
| Panama Canal SI No. | 764442 |
| Suez Canal ID No. | 013799 |
| Owner | Eidsiva Shipping Pte. Ltd. |
| Operator | Belships Management Pte. Ltd. |
| Classification | ABS |
| Builder | Hyundai Heavy Industries Ulsan |
| Launching | March 5, 1988 |
| Delivery | March 5, 1988 |
| Flag | Singapore |
| Port of Registry | Singapore |
| Official Number | 393420 |
| Call Sign | 9VFJ5 |
| Type (Kind of Cargo) | Pure Car Carrier |
| Length Overall | 183.90 M |
| Length B.P. | |
| LOA with Stern Ramp Down | |
| Breadth Extreme | |
| Breadth Moulded | 30.60 M |
| Depth Moulded | 30.23 M |
| Bow to Bridge Front | |
| Bow to Side Port | |
| Bow to Stern Port | |
| Bridge Wing to Bow | |
| Bridge Wing to Stern | |
| Bridge Wing to Ramp | |
| Bridge Wing to Side Ramp | |
| HT. from Antenna Fixed to baseline | |
| HT. from Folded Antenna to baseline | |
| HT. from Highest Antenna to baseline | |
| Draft (S.S.W.) | 8.21 M |
| Deadweight (S.S.W.) | 12,763 MT |
| Displacement (S.S.W.) | |
| Lightship Weight | 12,360 MT |
| Gross Registered Tons | 42,447 |
| Net Registered Tons | 12,734 |
| Suez - GRT | 45,953.54 |
| Suez - NRT | 41,055.85 |
| Panama - GRT | 46,162.21 |
| Panama - NRT | 40,283.88 |
| Holds/Hatches | |
| Number Car Decks | 11 |
| Total Car Capacity | 4,247 Units |
| Truck Capacity | |
| Total Square Footage | |
| TEU Capacity | |
| IMO NO. | 8718706 |
| Main Engine: Type & No. | Hyundai B&W – 8L60MCE |
| MCR/Normal Output BHP | 14,400 BHP x 111 RPM |
| Trial Speed | |
| Service Speed | |
| Chartered Speed | |
| Generators: Type & No. | |
| Bow Thruster & Rating | Kawasaki KT-130-B1 1200 HP |
| HFO/MDO Consumption @ Sea | |
| In Port (idle) | |