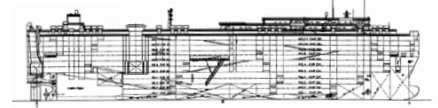


Pure Car/Truck Carriers

Vessel: Cypress Trail



International Shipholding Corp.



ABS No.	8801294
Panama Canal SI No.	765678
Suez Canal ID No.	13787
Owner	Perrine AS
Operator	Eukor Car Carrier
Classification	ABS
Builder	Hyundai Heavy Industries Ulsan
Launching	January 7, 1988
Delivery	June 17, 1988
Flag	Norway
Port of Registry	Oslo, Norway
Official Number	
Call Sign	LAYN5
Type (Kind of Cargo)	Pure Car Carrier
Length Overall	183.90 M
Length B.P.	174.00 M
LOA with Stern Ramp Down	
Breadth Extreme	
Breadth Moulded	30.60 M
Depth Moulded	30.23 M
Bow to Bridge Front	25.03 M
Bow to Side Port	
Bow to Stern Port	
Bridge Wing to Bow	
Bridge Wing to Stern	
Bridge Wing to Ramp	
Bridge Wing to Side Ramp	
HT. from Antenna Fixed to baseline	
HT. from Folded Antenna to baseline	
HT. from Highest Antenna to baseline	
Draft (S.S.W.)	8.2125 M
Deadweight (S.S.W.)	12,763.00 MT
Displacement (S.S.W.)	25,104.60 MT
Lightship Weight	12,395.97 MT
Gross Registered Tons	42,447.00 MT
Net Registered Tons	12,734.00 MT
Suez - GRT	45,953.54 MT
Suez - NRT	41,055.85 MT
Panama - GRT	46,162.21 MT
Panama - NRT	40,283.88 MT
Holds/Hatches	N/A
Number Car Decks	11
Total Car Capacity	4314
Truck Capacity	
Total Square Footage	
TEU Capacity	
IMO NO.	8912663
Main Engine: Type & No.	Hyundai B&W – 8L60MCE
MCR/Normal Output BHP	14,400 BHP (10,742 KW) x 111 Rpm
Trial Speed	
Service Speed	17.5
Chartered Speed	
Generators: Type & No.	
Bow Thruster & Rating	1200 PS (1183 HP) 883 KW
HFO/MDO Consumption @ Sea	
In Port (idle)	