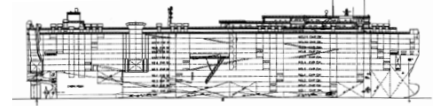


Pure Car/Truck Carriers

Vessel: Green Bay



International Shipholding Corp.



IMO/Lloyds No.	9339818
Panama Canal SI No.	3009034
Owner and Operator	Waterman Steamship Corp.
Classification	American Bureau of Shipping
Builder	Toyohashi Shipbuilding
Launching	5 June 2007
Delivery	7 August 2007
Flag	USA
Port of Registry	Mobile, Alabama
Official Number	1204654
Call Sign	WDD9433
Type (Kind of Cargo)	Car Carrier/RoRo
Length Overall	199.99m (656.1ft)
Length B.P.	192.00m (629.9ft)
LOA with Stern Ramp Down	222.54m (730.1ft)
Breadth Extreme	32.26m (105.8ft)
Breadth Moulded	32.26m (105.8ft)
Depth Moulded	35.80m (117.5ft)
Bow to Bridge Front	25.13m (82.4ft)
Bow to Side Port	133.50m (438.0ft)
Bow to Stern Port	191.82m (629.3ft)
Bridge Wing to Bow	25.13m (82.4ft)
Bridge Wing to Stern	165.94m (544.4ft)
Bridge Wing to Ramp	164.26m (538.9ft)
Bridge Wing to Side Ramp	105.94m (347.5ft)
B.L. HT. of Antenna Fixed	50.40m (165.3ft)
B.L. HT. of Folded Antenna	46.49m (152.5ft)
B.L. HT. of Highest Antenna*	50.40m not folded
Draft (S.S.W.)	9.625m (summer)
Deadweight (S.S.W.)	18,312 Mt
Displacement (S.S.W.)	35,002
Lightship Weight	16,912
Gross Registered Tons	59,250
Net Registered Tons	17,766
Suez - GRT	61,369.93
Suez - NRT	55,376.38
Panama - NRT	
Holds/Hatches	N/A
Number Car Decks	12
Total Car Capacity	6402
Truck Capacity	181
Total Square Footage	55,023.596 (car deck area)
TEU Capacity	N/A
Main Engine: Type & No.	B&W 7S60MC (Mark6)
MCR/Normal Output	12138KW
Trial Speed	22.21
Service Speed	19.8 knts
Generators: Type & No.	Diesel 1200 KBA (960 kW), AC 450V, 3ø/Hz x 3
Bow Thruster & Rating	KT-157B1/176KN/1100KW
HFO Consumption Sea/Port	52.3 / 5.0
MDO Consumption Sea/Port	0.1 / 1.5

*Whether in folded or fixed position please advise.