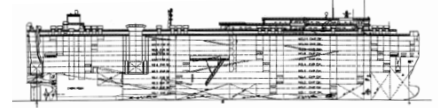


# Pure Car/Truck Carriers

Vessel: M.S. Green Lake



International Shipholding Corp.



<b>DNV No.</b>	<b>23675</b>
Panama Canal SI No.	808989
<b>Suez Canal ID No.</b>	<b>023249</b>
Owner and Operator	Central Gulf Lines/LMS Shipmgmt.
<b>Classification</b>	<b>DNV No. 23675 <math>\cong</math> 1A1 PCC E0</b>
Builder	Shin-Kurusima Dockyard
<b>Launching</b>	<b>16 March 1998</b>
Delivery	24 June 1998
<b>Flag</b>	<b>USA</b>
Port of Registry	Mobile, AL
<b>Official Number</b>	<b>1115462</b>
Call Sign	WDDI
<b>Type (Kind of Cargo)</b>	<b>Pure Car/Truck Carrier</b>
Length Overall	199.930 M
<b>Length B.P.</b>	<b>190.000 M</b>
LOA with Stern Ramp Down	226.430 M
<b>Breadth Extreme</b>	<b>32.260 M</b>
Breadth Moulded	32.269 M
<b>Depth Moulded</b>	<b>34.550 M</b>
Bow to Bridge Front	49.320 M
<b>Bow to Side Port</b>	<b>106.920 M</b>
Bow to Stern Port	186.970 M
<b>Bridge Wing to Bow</b>	<b>50.520 M</b>
Bridge Wing to Stern	149.410 M
<b>Bridge Wing to Stern Ramp</b>	<b>136.450 M</b>
Bridge Wing to Side Ramp	56.400 M
<b>B.L. HT. of Antenna Fixed</b>	<b>47.541 M</b>
B.L. HT. of Folded Antenna	46.987 M
<b>B.L. HT. of Highest Antenna</b>	<b>52.219 M (folding type full up position)</b>
Draft (S.S.W.)	10.019 M
<b>Deadweight (S.S.W.)</b>	<b>22,799.00 MT</b>
Displacement (S.S.W.)	
<b>Lightship Weight</b>	<b>16,108.00 MT</b>
Gross Registered Tons	57,623.00 MT
<b>Net Registered Tons</b>	<b>17,287.00 MT</b>
Suez - GRT	63,312.90 MT
<b>Suez - NRT</b>	<b>62,697.93 MT</b>
PC/UMS NRT	57510 MT
<b>Holds/Hatches</b>	<b>12 Holds/4 Hatches</b>
Number Car Decks	12
<b>Total Car Capacity</b>	<b>5980 compact/5055 standard units</b>
Truck Capacity	Unable to find relevant accurate data
<b>Total Square Footage</b>	<b>52,806 M<sup>2</sup></b>
TEU Capacity	
<b>IMO NO.</b>	<b>9158288</b>
Main Engine: Type & No.	Kobe Diesel – 8UEC60LS x 1 set
<b>MCR/Normal Output BHP</b>	<b>19,200 @ 100 RPM/17,280 @ 96.5 RPM</b>
Trial Speed	21.630 KTS
<b>Service Speed</b>	<b>19,300 KTS</b>
Chartered Speed	18,800 KTS
<b>Generators: Type &amp; No.</b>	<b>Daihatsu – D/G 1 375 kW, AC 450V, 60 Hz x 3 set</b>
Bow Thruster & Rating	1 set @2,000 HP/30 minute rating
<b>HFO Consumption Sea/Port</b>	<b>57.00/11.00 KT per day</b>
MDO Consumption Sea/Port	0.24 MT/negligible in port