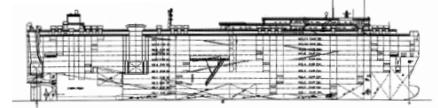


Pure Car/Truck Carriers

Vessel: Green Point



International Shipholding Corp.



ABS No.	9437177
Panama Canal SI No.	804851
Suez Canal ID No.	20573
Owner and Operator	Sulphur Carriers, Inc.
Classification	ABS A1, AMS, ACCU
Builder	Mitsubishi Heavy Ind Ltd, Nag
Launching	14 February 1994
Delivery	24 May 1994
Flag	USA
Port of Registry	Mobile, AL
Official Number	1065555
Call Sign	WCY4148
Type (Kind of Cargo)	Pure Car/Truck Carrier
Length Overall	180 M
Length B.P.	170 M
LOA with Stern Ramp Down	211.4 M
Breadth Extreme	32.36 M
Breadth Moulded	32.26 M
Depth Moulded	34.5 M
Bow to Bridge Front	28 M
Bow to Side Port	81.75
Bow to Stern Port	NA
Bridge Wing to Bow	28 M
Bridge Wing to Stern	152 M
Bridge Wing to Stern Ramp	152 M
Bridge Wing to Side Ramp	53.75 M
B.L. HT. of Antenna Fixed	53.1 M
B.L. HT. of Folded Antenna	44.1 M
B.L. HT. of Highest Antenna	53.1 M (Up position)
Draft (S.S.W.)	9.2 M
Deadweight (S.S.W.)	14,930
Displacement (S.S.W.)	30,946
Lightship Weight	15,125
Gross Registered Tons	57,819
Net Registered Tons	15,546
Suez - GRT	56,550.65
Suez - NRT	51,746.46
Panama - NRT	51,818
Holds/Hatches	4 Holds
Number Car Decks	12 Decks
Total Car Capacity	5120
Truck Capacity	
Total Square Footage	45,469 meters squared
TEU Capacity	NA
IMO NO.	9056296
Main Engine: Type & No.	Mitsubishi-UE 7UE C60LS x 1 set
MCR/Normal Output BHP	16.2 K BHP @ 100 RPMs
Trial Speed	21.63 KTS
Service Speed	19.0 KTS
Chartered Speed	18.5 KTS
Generators: Type & No.	General Motors GM 71T x 1 set
Bow Thruster & Rating	1,800 HP (1)
HFO Consumption Sea/Port	46.7 MT/Day – various
MDO Consumption Sea/Port	0.1 MT/Day – various