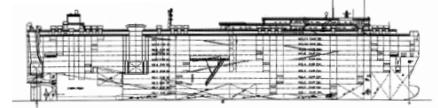


# Pure Car/Truck Carriers

Vessel: Green Ridge



International Shipholding Corp.



<b>ABS No.</b>	<b>9441138</b>
Panama Canal SI No.	392537
<b>Suez Canal ID No.</b>	<b>23550</b>
Owner and Operator	Central Gulf Lines/LMS
<b>Classification</b>	<b>ABS</b>
Builder	Imbari
<b>Launching</b>	<b>13 September 1998</b>
Delivery	30 October 1998
<b>Flag</b>	<b>USA</b>
Port of Registry	New Orleans
<b>Official Number</b>	<b>1176596</b>
Call Sign	WZZF
<b>Type (Kind of Cargo)</b>	<b>PCTC</b>
Length Overall	199.94 M
<b>Length B.P.</b>	<b>190.00 M</b>
LOA with Stern Ramp Down	227.00 M
<b>Breadth Extreme</b>	<b>32.20 M</b>
Breadth Moulded	32.20 M
<b>Depth Moulded</b>	<b>23.53 M</b>
Bow to Bridge Front	18.3 M
<b>Bow to Side Port</b>	<b>NA</b>
Bow to Stern Port	NA
<b>Bridge Wing to Bow</b>	<b>18.3 M</b>
Bridge Wing to Stern	181.6 M
<b>Bridge Wing to Stern Ramp</b>	<b>179 M</b>
Bridge Wing to Side Ramp	85.9 M
<b>Max B.L. Fixed HT. - Funnel</b>	<b>45.97 M</b>
B.L. HT. of Folded Antenna	44.1 M
<b>B.L. HT. of Highest Antenna*</b>	<b>51.45 M</b>
Draft (S.S.W.)	10.06 M
<b>Deadweight (S.S.W.)</b>	<b>21,523</b>
Displacement (S.S.W.)	38,874
<b>Lightship Weight</b>	<b>17,351</b>
Gross Registered Tons	57,449
<b>Net Registered Tons</b>	<b>17,235</b>
Suez - GRT	62,655.07
<b>Suez - NRT</b>	<b>58,919.95</b>
Panama - NRT	57311
<b>Holds/Hatches</b>	<b>4 Holds</b>
Number Car Decks	12
<b>Total Car Capacity</b>	<b>6000</b>
Truck Capacity	
<b>Total Square Footage</b>	<b>49,930 SQ MTR</b>
TEU Capacity	NA
<b>IMO NO.</b>	<b>09177428</b>
Main Engine: Type & No.	Kobe Mitsubishi 8UEC60LS
<b>MCR/Normal Output BHP</b>	<b>14,121 KW/12,709 (17280PS)</b>
Trial Speed	19.3
<b>Service Speed</b>	<b>18.5</b>
Chartered Speed	18.5
<b>Generators: Type &amp; No.</b>	<b>YANMAR (1100KW) 3 Sets</b>
Bow Thruster & Rating	2,000 HP/1500KW
<b>HFO Consumption Sea/Port</b>	<b>50MT Day/2-3MT Day</b>
MDO Consumption Sea/Port	0-.1 Day/0-3MT Day

\*Whether in folded or fixed position please advise.