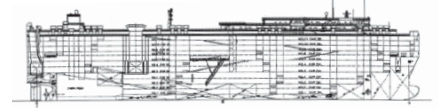


Pure Car/Truck Carriers

Vessel: CSAV Rio Geike



International Shipholding Corp.



IMO No.	9476721
Panama Canal SI No.	Currently Not Available
Suez Canal ID No.	3831
Owner and Operator	East Gulf Shipholding, Inc.
Classification	ABS NO. 10221683
Builder	Mitsubishi Heavy Industries, Ltd.
Launching	17 December 2009
Delivery	31 March 2010
Flag	The Republic of Marshall Islands
Port of Registry	Majuro
Official Number	3831
Call Sign	V7TM4
Type (Kind of Cargo)	Pure Car/Truck Carrier
Length Overall	199.99 M
Length B.P.	192.00 M
Breadth Extreme	32.260 M
Breadth Moulded	32.260 M
Depth Moulded	34.520 M
Bridge Wing to Bow	20.170 M
Bridge Wing to Stern	179.82 M
B.L. HT. of Antenna Fixed	45.570 M
Stores cranes SWL	SWL
Draft (S.S.W.)	9.7250 M
Deadweight (S.S.W.)	18,701 Metric Tons
Displacement (S.S.W.)	34,173 Metric Tons
Lightship Weight	15,472 Metric Tons
Gross Registered Tons	60,213 (International)
Net Registered Tons	18,573 (International)
Suez - GRT	67,167.67
Suez - NRT	63,482.84
Panama - NRT	60,155
Holds/Hatches	N/A
Number Car Decks	12
Overall Capacity	6340
TEU Capacity	
Main Engine: Type & No.	Mitsubishi - UE Type Diesel Engine 7UEC60LSII
MCR/Normal Output	14315 kw 105 RPM / 12170 kw 99.5 RPM
Trial Speed	22.01 Knots, Engine Load 85% 105.1 RPM
Service Speed	19.00 Knots
Generators: Type & No.	Daihatsu - 5DK-26, 1150kw x 3 sets
Bow Thruster & Rating	Kawaski KT-15785, 1350 kw
HFO Consumption Sea	35-57 metric tons per day (85-105 RPM)
HFO Consumption Port	3.0-5.7 mt /day (depends on Fans running)
MDO Consumption Sea	0.1 mt /day for incinerator
MDO Consumption Port	0 / 0.1 metric tons per day